

reddot design award
winner

Tents for Events

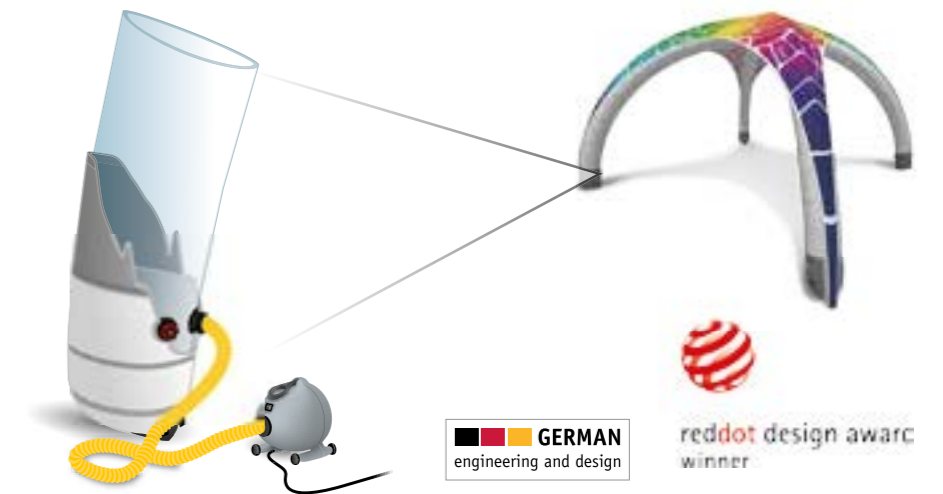


Creative Event Equipment

SOLID AS STONE. LIGHT AS AIR.

Manufacturer of the original Inflatable Event Tent

Since 2007, X-GL00 has been the specialist in inflatable event tents. We have invested thousands of hours in engineering and have extensively tested dozens of fabrics and prototypes to ensure that our tents stand up to wind and weather time and time again. Thanks to these rigorous quality standards, the X-GL00 Inflatable Event Tent remains the tent you can turn to for an attractive, reliable, and lightweight housing for your display or event.



X-GL00 Inflatable Event Tents — mobile. creative. individual. easy. Thanks to its aerodynamic form, high-tech materials, and clever stabilization system, the lightweight X-GL00 Inflatable Event Tent is perfectly suited for indoor and outdoor use, wind-stable, waterproof, and fulfills the B1 fire protection norm. Four tent sizes with footprints of up to 8x8 meters make the X-GL00 Inflatable Event Tent the ideal presentation platform for any situation or location. The Event Tent is individually customizable and reduces to a surprisingly-small pack volume for easy transport and storage.

HIGH QUALITY

down to the smallest details.

X-GLOO Inflatable Event Tents are designed and constructed to be of the highest quality and functionality. This attention to detail is reflected in the fabrics we use down to the convenient placement of the inflation valves and the selection of zippers. It also makes the Event Tent quick and easy to set up—time and time again.

Additionally, our tents are waterproof, fire retardant, UV resistant, and stable in winds up to 60 km/h—we tested the X-GLOO Inflatable Event Tent in a professional wind tunnel to prove it.

“For just over eight years now our X-Gloo has accompanied us at all Slackline-Tools events around the world. Every time we continue to be happy that it is set up so quickly and looks great.”

— Fabian Müller
Slackline-Tools GbR, www.slackline-tools.de



Double-row stitching in key areas provides strength and durability.



Large stainless-steel anchor rings make it easy to secure the Event Tent in locations with high winds using tent pegs or one of our ballast options.

“I was really impressed with the quality of your product. Being a product designer myself I can really appreciate the details, the packaging and the function.”

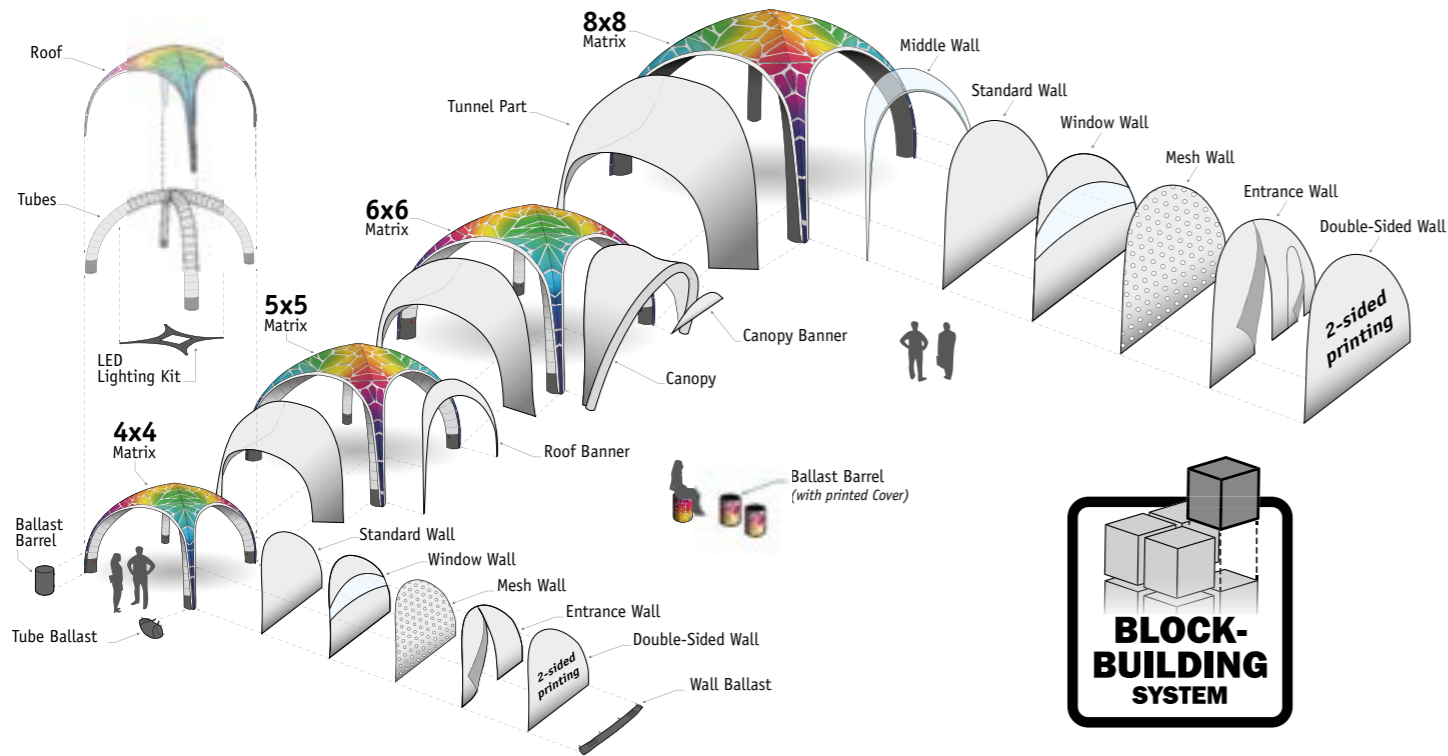
— Alexis Angelides,
CARVINGMAGAZINE



Well-thoughtout details like the connection loops inside and outside the tent provide versatility and allow for easy anchoring.



Specially-chosen inflation and overpressure valves allow for quick setup and prevent overinflation.



**INDIVIDUAL.
EASY.**

X-GLOO offers options to fit your needs and to grow with them.

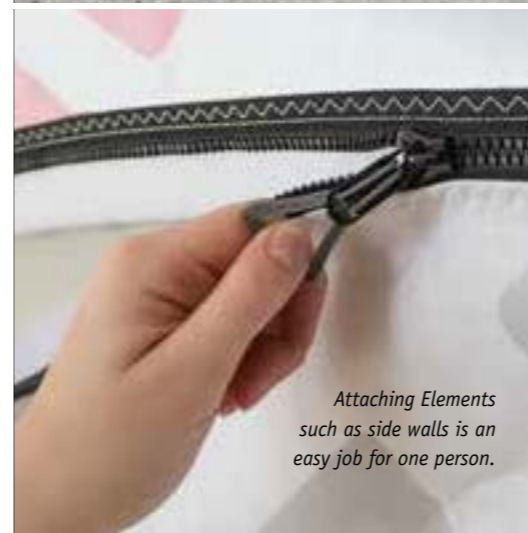
The Block-Building System, upon which the X-GLOO Inflatable Event Tent is designed, provides you with maximum versatility and convenience. The optional Walls, Tunnels Parts, Banners, and Canopies can be zipped on or off quickly and easily. The roof and tubes which make up the tent „Matrix“ can also be removed, exchanged, or replaced. What this means to you is that the X-GLOO Inflatable Event Tent can grow or change with your needs.



Thanks to the Block-Building System it is quick and easy to remove the tent roof and tubes—perfect if you ever need to update your logo or message.



Walls, Canopies, Banners, and other optional Elements let you create the perfect tent to suit your needs.



Attaching Elements such as side walls is an easy job for one person.



Thanks to the unique arrangement of zippers, all walls can be connected so that the design faces the inside or the outside of the tent. With Double-Sided Walls, your branding is always visible from both the inside and outside of the tent.

INDIVIDUAL. CREATIVE.

Our full-surface dye-sublimation printing option guarantees the perfect appearance.

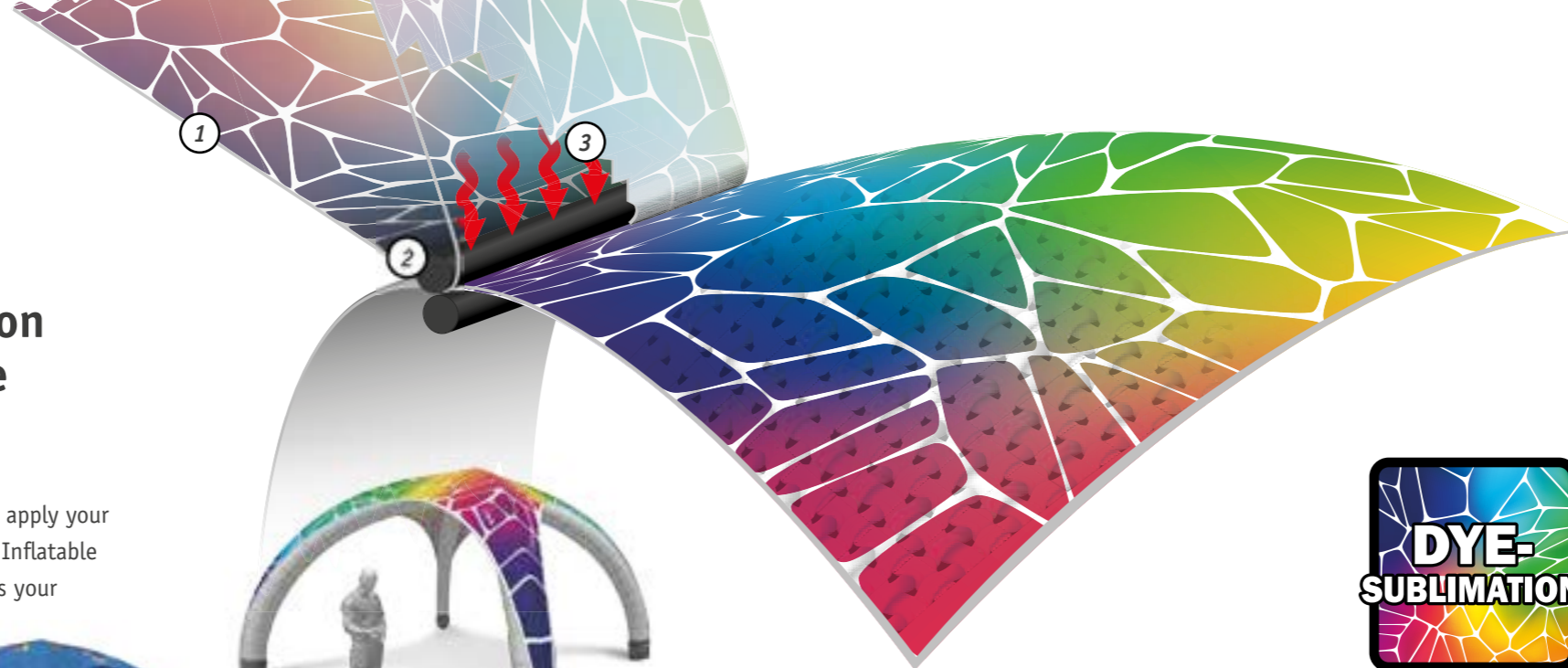
Your brand is important, which is why we give you the ability to apply your logo, text, images and CI colors to every Element of the X-GLOO Inflatable Event Tent. This allows you to make your Event Tent as unique as your product or brand.

"These tents look awesome!... I am excited to do more projects together with X-GLOO."

— Dan Paulsrud, GMR Marketing,
New Berlin, USA

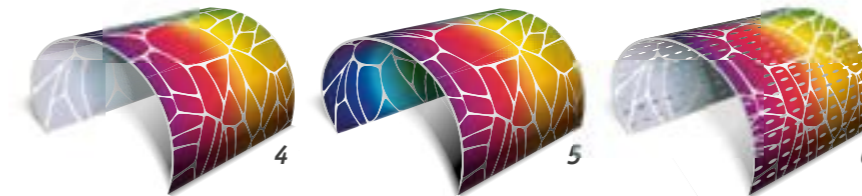


The images above are sample product renderings only.



VIBRANT, HIGH-QUALITY DYE-SUBLIMATION PRINTING

We use a modern dye-sublimation printing process to ensure the best print results possible. This process starts with the art being applied to a transfer film with a liquid-gel dye (1). The film is then laid on top of the tent material and then sent through the heated cylinders (2). The calender uses heat and pressure to cause the dye in the film to vaporize and enter the fabric (3), where it cools and turns back into a solid. Because the dye goes *into* the fibers of the fabric, the colors are highly resistant to fading, and they will not flake or crack.



Dye-sublimation printing on our Standard (4), Double-Sided (5), and Mesh Wall (6) material.

Need your tent REALLY soon?

For occasions when you need a tent as soon as possible, we have a large assortment of customizable in-stock products in a variety of colors, so we can still provide you with a tent for your event which is unique, eye-catching, and doesn't sacrifice on quality.



IN-STOCK + BRANDING

Plus, you still have the option to add your logo or image using thermal-transfer foil printing.







4x4 X-GLOO INFLATABLE EVENT TENT

Perfect for more compact spaces, the 4x4 X-GLOO Inflatable Event Tent offers plenty of flexibility and customization options through the various available Elements and the ability to connect multiple tents to one another. Thanks to its minimal weight and low pack volume, the 4x4-meter Event Tent is easy for one person to transport and set up.

OPTIONAL ELEMENTS



Entrance Wall



Window Wall



Standard / Mesh / Double-Sided Wall



Canopy

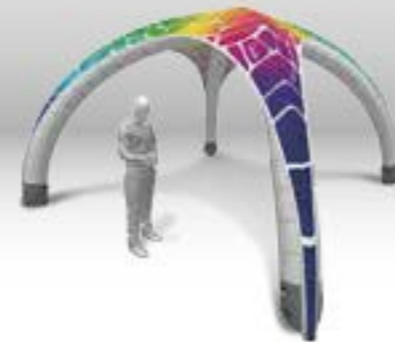


Tunnel Parts
4>4 / 4>5 / 4>6

SPECIFICATIONS

Exterior Side Length: 4,00 m / 13' 2" | Entrance Height: 1,92 m / 6' 4"
 Total Height: 2,50 m / 8' 2" | Covered Surface Area: 7,23 m² / 77.82 ft²
 Weight: 13,13 kg / 29.32 lbs | Setup Time: 5 min (electric pump) / 15 min (hand pump)

All specifications are approximate. Please refer to page 19 for a complete listing.



5x5 X-GLOO INFLATABLE EVENT TENT

Our most popular model, the 5x5 X-GLOO Inflatable Event Tent offers more visibility and a higher degree of customization thanks to the optional Roof and Canopy Banners. At less than 20 kg, the 5x5 model is still comfortable for one person to carry and set up, and offers plenty of room underneath for displaying larger products such as jet skis, bicycles, or compact cars.

OPTIONAL ELEMENTS



Entrance Wall



Window Wall



Standard / Mesh / Double-Sided Wall



Roof Banner



Canopy / Canopy Banner



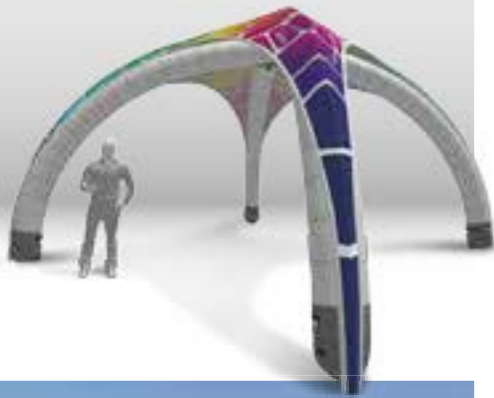
Tunnel Parts
5>4 / 5>5 / 5>6

SPECIFICATIONS

Exterior Side Length: 5,00 m / 16' 5" | Entrance Height: 2,40 m / 7' 10"
 Total Height: 3,00 m / 9' 10" | Covered Surface Area: 11,30 m² / 121.63 ft²
 Weight: 18,80 kg / 41.45 lbs | Setup Time: 10 min (electric pump) / 23 min (hand pump)

All specifications are approximate. Please refer to page 19 for a complete listing.





6x6 X-GLOO INFLATABLE EVENT TENT

The 6x6 X-GLOO Inflatable Event Tent combines the wide range of customization options of the 5x5 Event Tent with a size nearly as large as the 8x8. The result? A tent which is designed to bring maximum exposure to your display and your brand, with a size large enough to comfortably fit all of your guests, seating, display shelving, or even boats or large automobiles.

OPTIONAL ELEMENTS



Entrance Wall



Window Wall



Standard / Mesh / Double-Sided Wall



Roof Banner



Canopy / Canopy Banner



Tunnel Parts
6>4 / 6>5 / 6>6 / 6>8

SPECIFICATIONS

Exterior Side Length: 6,00 m / 19' 8" | Entrance Height: 3,00 m / 9' 10"
 Total Height: 3,57 m / 11' 8" | Covered Surface Area: 16,27 m² / 175.12 ft²
 Weight: 25,50 kg / 56.22 lbs | Setup Time: 15 min (electric pump) / 30 min (hand pump)

All specifications are approximate. Please refer to page 19 for a complete listing.



8x8 X-GLOO INFLATABLE EVENT TENT

The biggest tent in our fleet for your biggest events. Great for large parties and gatherings, the 8x8 gives you a huge covered area for hosting your guests, and at the same time allows for high-quality branding of the roof and optional walls. Despite its massive size, the 8x8-meter Event Tent weighs only 42 kg, and can be set up with two people in as little as 25 minutes using an electric pump.

OPTIONAL ELEMENTS



Entrance Wall



Window Wall



Standard / Mesh / Double-Sided Wall



Middle Wall [Roof Banner]



Tunnel Parts
8>6 / 8>8

SPECIFICATIONS

Exterior Side Length: 7,85 m / 25' 9" | Entrance Height: 3,70 m / 12'
 Total Height: 5,0 m / 16' 5" | Covered Surface Area: 30,30 m² / 326.15 ft²
 Weight: 42,00 kg / 92.60 lbs | Setup Time: 25 min (electric pump)

All specifications are approximate. Please refer to page 19 for a complete listing.





ACCESSORIES

PUMPS



Hand Pump
Suitable for: 4x4 / 5x5 / 6x6



Electric Pump BRAVO OV 10
Suitable for: 4x4 / 5x5 / 6x6



Electric Pump BRAVO TURBOMAX
for 12V auto batteries
Suitable for: 4x4 / 5x5 / 6x6



Electric Pump BRAVO 230/2000
Suitable for: 8x8

ANCHORING OPTIONS



Anchors
Sets suitable for all X-GLOO tent sizes



Tube Ballasts
Sets suitable for: 4x4 / 5x5 / 6x6



Water Ballast Barrels
Sets suitable for all X-GLOO tent sizes



Water Ballast Barrels
w/ optional Printed Covers
Make a great seating option!



Wall Ballast
Suitable for all X-GLOO tent sizes



Snow Anchors
Sets suitable for all X-GLOO tent sizes



Sand Anchors
Sets suitable for all X-GLOO tent sizes

TRANSPORT / PROTECTION



Trolley XL / XXL
Suitable for: 4x4 / 5x5 / 6x6



Aluminum Box
Suitable for all X-GLOO tent sizes



Protection Foil
Suitable for all X-GLOO tent sizes



LIGHTING



LED Lighting Kit
Suitable for all X-GLOO tent sizes

SPECIFICATIONS

All specifications are approximate

X-GLOO MATRIX	4x4	5x5	6x6	8x8
Exterior Side Length (m [ft/in])	4,00 [13' 2"]	5,00 [16' 5"]	6,00 [19' 8"]	7,85 [25' 9"]
Entrance Height (m [ft/in])	1,92 [6' 4"]	2,40 [7' 10"]	3,00 [9' 10"]	3,70 [12']
Total Height (m [ft/in])	2,50 [8' 2"]	3,00 [9' 10"]	3,57 [11' 8"]	5,00 [16' 5"]
Tube Diameter (cm [in])	25,00 [10"]	31,00 [12"]	37,00 [14"]	43,00 [17"]
Covered Surface Area (m ² [ft ²])	7,23 [77.82]	11,30 [121.63]	16,27 [175.12]	30,30 [326.15]
Weight (kg [lbs])	13,13 [29.32]	18,80 [41.45]	25,50 [56.22]	42,00 [92.60]
Setup Time Electric/Hand Pump (min)	5 / 15	10 / 23	15 / 30	25 / -
CANOPY	4x4	5x5	6x6	8x8
Total Height (m [ft/in])	2,17 [7']	2,71 [8' 10"]	3,25 [10' 8"]	-
Tube Diameter (cm [in])	12,50 [5"]	15,60 [6"]	18,75 [7"]	-
Total Covered Surface Area (Tent with 4 Canopies) (m ² [ft ²])	22,83 [245.74]	35,67 [383.95]	51,34 [552.62]	-
Weight (kg [lbs])	3,06 [6.75]	4,40 [9.70]	6,06 [13.36]	-
Setup Time Electric/Hand Pump (min)	2-3 / 5	2-3 / 5	2-3 / 5	-
CANOPY BANNER	4x4	5x5	6x6	8x8
Width (m [ft/in])	-	2,93 [9' 7"]	3,51 [11' 6"]	-
Height (m [ft/in])	-	0,51 [1' 8"]	0,67 [2' 2"]	-
SIDE WALLS	4x4	5x5	6x6	8x8
Width (m [ft/in])	3,76 [12' 4"]	4,72 [15' 6"]	5,64 [18' 6"]	7,60 [25']
Height (m [ft/in])	2,27 [7' 5"]	2,84 [9' 4"]	3,44 [11' 3"]	3,58 [11' 9"]
ROOF BANNER / MIDDLE WALL	4x4	5x5	6x6	8x8
Width (m [ft/in])	-	4,20 [13' 9"]	5,00 [16' 5"]	7,76 [25' 9"]
Height (m [ft/in])	-	0,72 [2' 4"]	0,86 [2' 8"]	0,83 [2' 9"]
Entrance Height (m [ft/in])	-	1,90 [6' 3"]	2,38 [7' 9"]	3,35 [11']

CONTENTS OF DELIVERY

Event Tent Matrix, Multifunction Transport Bag (Quick Pack Sack for 8x8), hand pump, anchoring line set, user's manual, closing rod (5x5, 6x6, 8x8), setup support bar (8x8), and repair kit.

ONLINE HOW-TO VIDEO LIBRARY

Learn about the Block-Building System, how to set up an X-GLOO Inflatable Event Tent and more!

www.x-gloo.com/en/experience/videos/



The X-GL00 In atable Event Tent is the flexible and lightweight solution perfect for any event, and provides the desired attention with limitless customization and color options while saving on staff and time. The X-GL00 In atable Event Tent is the perfect presentation platform with tent footprints starting at 4x4m going up to infinitely large tent cities. With distributors in over 30 countries across 5 continents, it's easy to get a quote for your tent.



IMPRESSUM : by Skywalk GmbH & Co. KG | www.x-gloo.com



Dorfstrasse 16
A-5324 Faistenau
T+43 6228 2216
M+43 676 6675946
info@grossar.net

GROSSAR
INNOVATIVEPRODUCTS

www.grossar.net

XPCTEN0000
Catalogue Event Tent English 2017

